



## Census 2021

The 2021 Census was held on 10 August 2021 at the peak of the COVID-19 pandemic. With interstate and overseas travel at an all-time low, most residents were at home, which offered a unique opportunity to obtain a baseline profile of the Burnside Community.

The Australian Bureau of Statistics (ABS) released the first round of Census data on 28 June 2022, and since this time, Council's demographic data consultant, .id have been busy updating Burnside's Community Profile.

**City of Burnside**

401 Greenhill Road, Tusmore SA 5065

8366 4200 | [burnside@burnside.sa.gov.au](mailto:burnside@burnside.sa.gov.au) | [burnside.sa.gov.au](http://burnside.sa.gov.au)

## Why is Census data important?

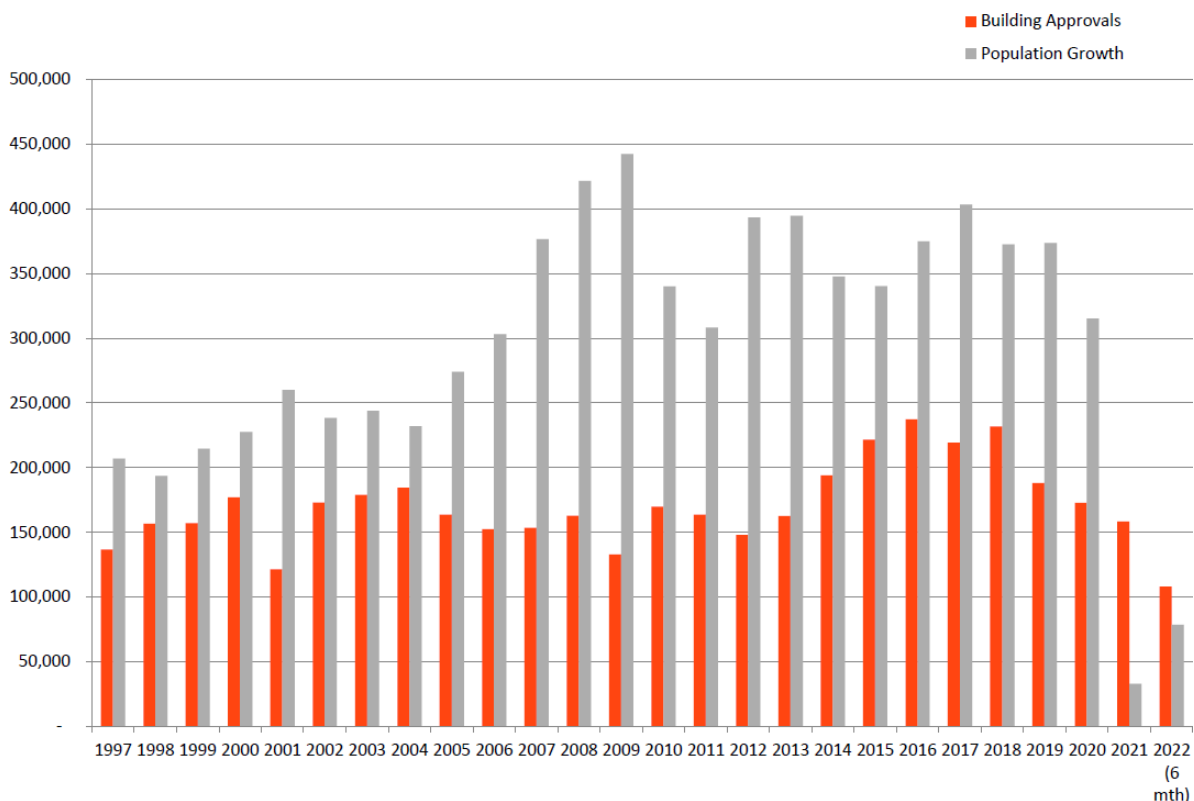
Census data is vital for the development and review of Council’s suite of strategic plans, as well as ensuring Council’s services, programs and facilities continue to meet the future and changing needs of our evolving community.

## What did Census 2021 tell us about Australia?

Australia’s record period of population growth ended with the COVID-related international border closures and resulted in the lowest growth rate (0.13 per cent) in 100 years. Figure 1 below shows that with the re-opening of borders, the population growth rate has more than doubled in the last six months.

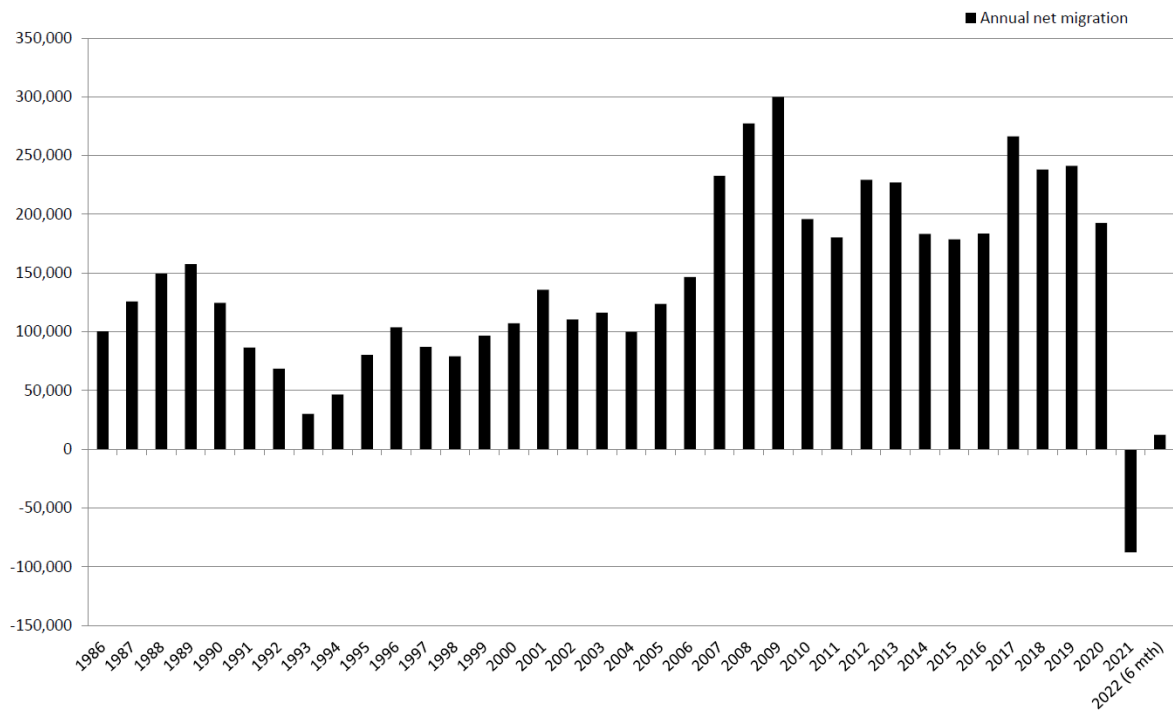
Likely due to the end of the Home Builder Scheme, rising inflation and rising interest rates, building approvals nationally have declined compared to last year’s figures (see Figure 1).

Figure 1 – National Population Growth and Building Approvals



The national annual net overseas migration rate fell from a 15 year high of 200,000 in the previous year to a net decline of 88,000 (Figure 2). There has been a slight upswing in the last six months, which may increase further following the Federal Government’s recently announced increase to the permanent migration cap.

Figure 2 – Net Overseas Migration

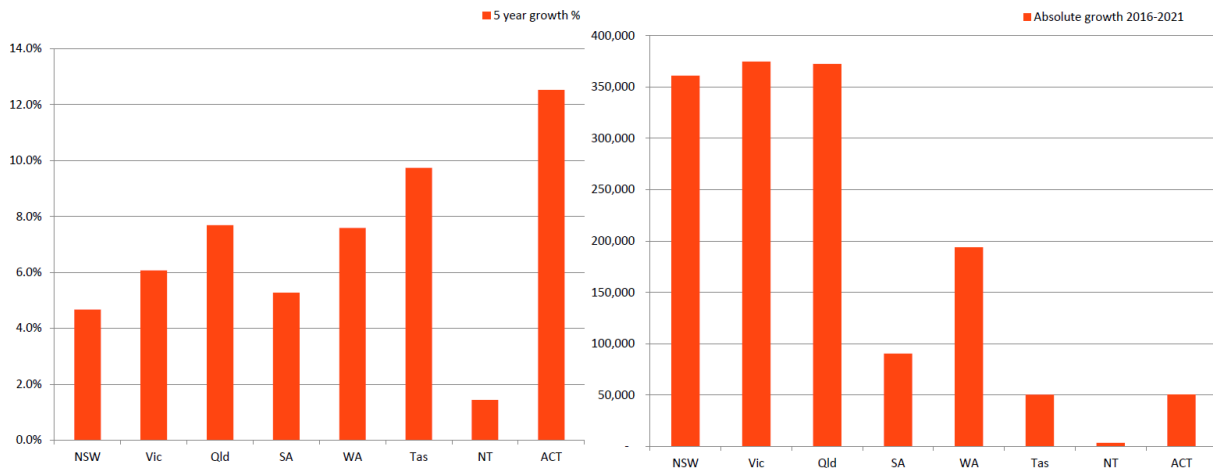


## What did Census 2021 tell us about South Australia?

### Population

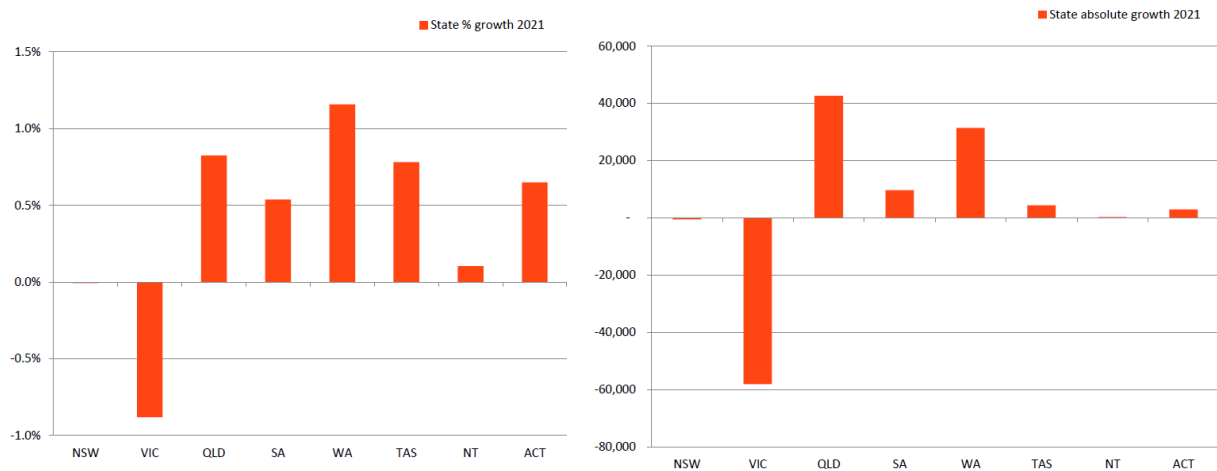
Between 2016 and 2021, South Australia's (SA's) population grew by 5.3 per cent which equates to an additional 90,000 people (Figure 3).

Figure 3 – State Population Change 2016 to 2021 (percentage and numbers)



SA's population only grew by 0.5 per cent (10,000 people) during the peak of the pandemic in 2021, when interstate borders were closed (Figure 4).

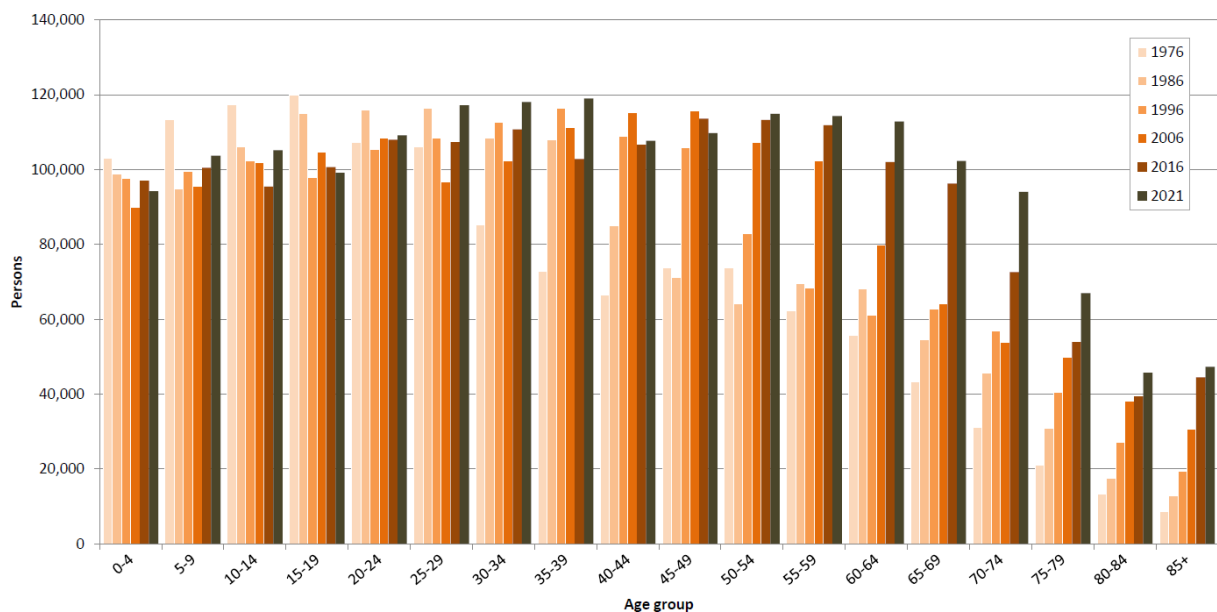
Figure 4 – State Population Change 2021 (percentage and numbers)



## Population Age Groups

SA's median age increased marginally from 40 to 41 between 2016 and 2021 (Figure 5). There were also large increases in the 25 to 39 and 60 to 79 age brackets compared to the 2016 Census.

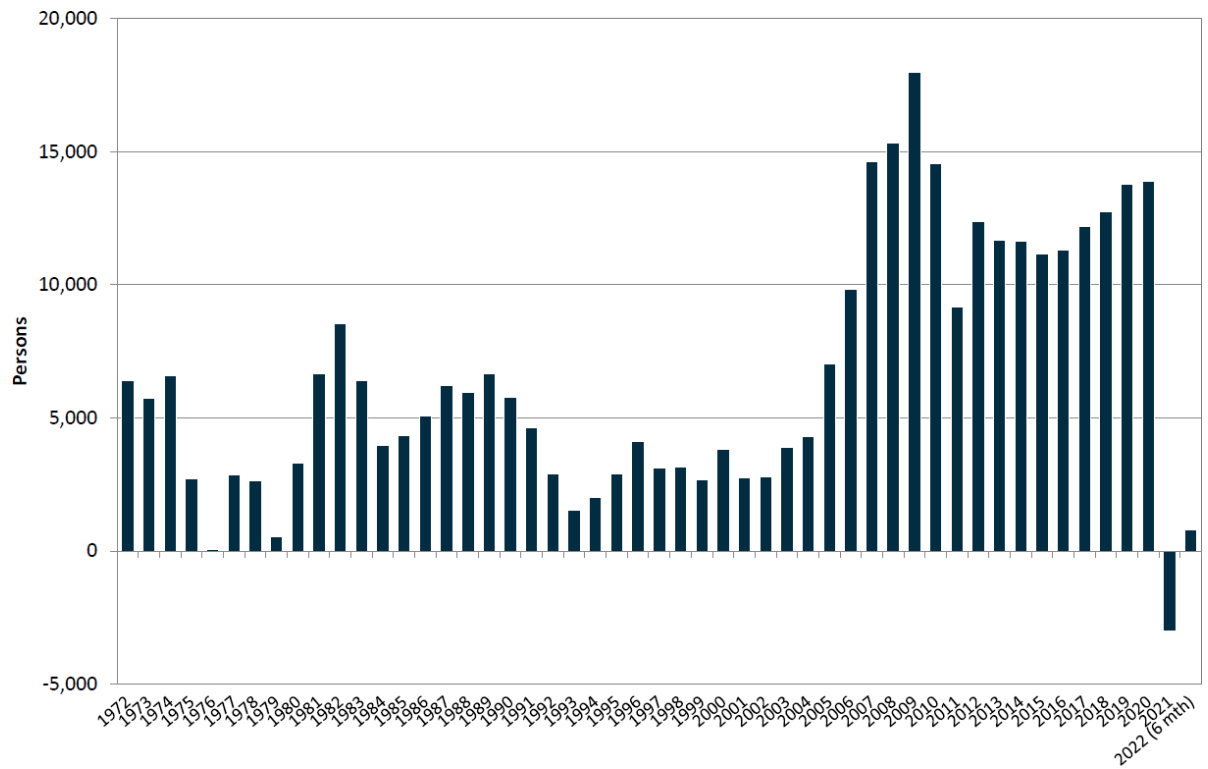
Figure 5 – South Australian Population by 5 Year Age Groups



## Migration – Overseas and Interstate

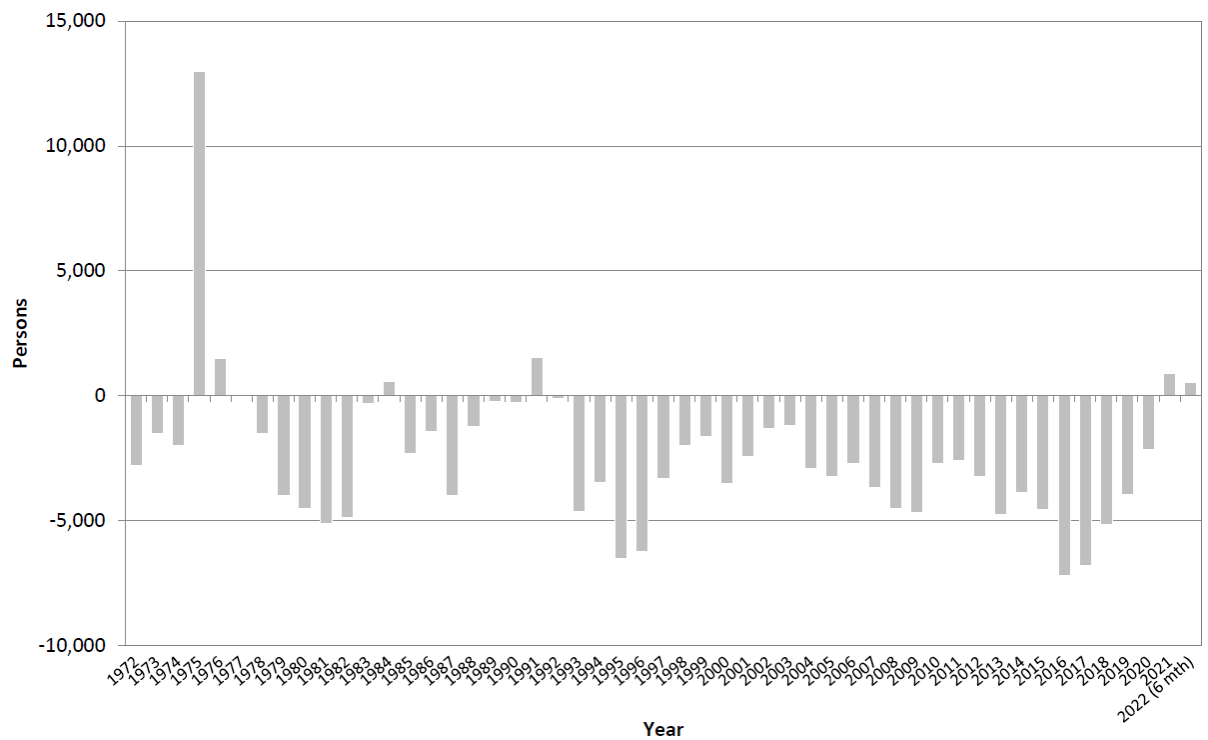
SA's population growth has historically relied on overseas migration, with a rate of 12,000 to 15,000 net migrants per year. Whilst overseas migration was negative for South Australia in 2020-2021 (see Figure 6), it has marginally increased in the last six months.

Figure 6 – South Australia Net Overseas Migration



Bucking the normal trend for South Australia, net interstate migration shown in Figure 7 has increased during the pandemic.

Figure 7 – South Australia Net Interstate Migration



## What did Census 2021 tell us about Burnside?

### Population

The 'usual resident population' of the City of Burnside in 2021 was 46,030, living in 19,626 dwellings (Figure 8 and 9). Since 2016, the city's population has increased by 2,119 people (4.8 per cent), with an additional 287 dwellings.

Figure 8 – 2021 Population Trends and Change from 2016

Trend	City of Burnside	South Australia
Population 2021	46,030 (+2,119 people, +4.8%)	1,781,516 (+104,863, +6.3%)

### Household Size and Occupancy rate

The average household size increased by 0.05 to 2.47 people, which is above the state average (Figure 9). This increase is likely due to fewer people being away overseas or interstate compared to the previous Census periods.

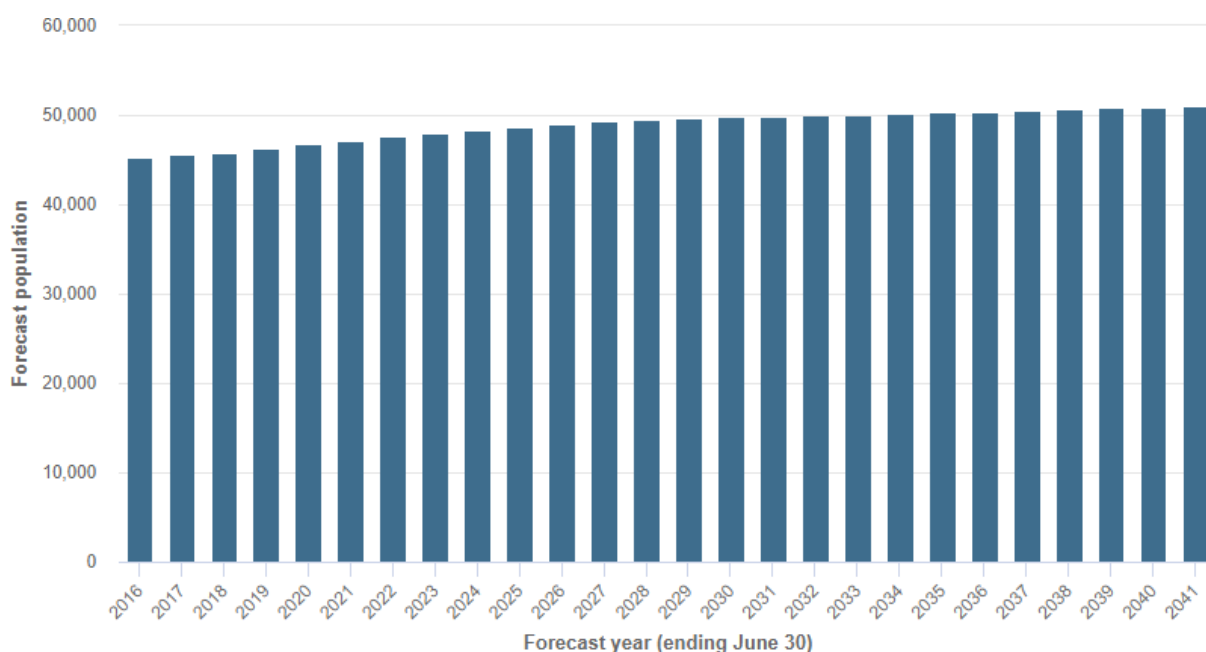
It is worth noting that the rate of unoccupied dwellings fell from 10 per cent to 7.9 per cent over five years. This decrease is likely the result of several factors, including the transition of new owners/renters into the City of Burnside and the impact of the pandemic at the time of the Census.

Figure 9 – 2021 Population Trends and Change from 2016

Trend	City of Burnside	South Australia
Dwelling change 2016-2021	19,626 (+287, +1.5%)	808,366 (+41,099, +5.3%)
Average household size 2021	2.47 (+0.05)	2.38 (-0.01)

The population of the City of Burnside is forecast to increase by around 4,000 people and reach 50,000 by 2033 (Figure 10). This expected increase in population was a major rationale for the direction set out in the *City of Burnside City Master Plan – Connecting People to Places*.

Figure 10 – Forecast Population



## Migration

Over 900 people moved to Burnside from Adelaide’s northern and western suburbs between 2016 and 2021 (refer Figure 11). The most significant number of people emigrating from Burnside were to Campbelltown, Brisbane, Mitcham and Canberra.

Figure 11 – City of Burnside Immigration and Emigration 2016-2021 (extract from larger table)

Council Area	People
Port Adelaide Enfield	+268
Salisbury	+250
Tea Tree Gully	+189
Marion	+144
West Torrens	+81
Campbelltown	-408
Brisbane	-204
Mitcham	-125
Canberra	-95



## Suburbs Population Trends

Over the five years since 2016, Glenside-Eastwood, Linden Park, Glen Osmond, Glenunga- Frewville, and Mount Osmond have experienced the most significant population increases (refer Figure 12). Those suburbs that experienced the lowest or negative growth were Dulwich, Erindale, Rosslyn Park, Rose Park, and Toorak Gardens.

Figure 12 – Suburbs Population Trends

Suburb	2021	2016	2011	5 Year Change	10 Year Change
Auldana-Skye	922	907	891	1.7%	3.5%
Beaumont	2,731	2,575	2,491	6.1%	9.6%
Beulah Park	1,601	1,597	1,556	0.3%	2.9%
Burnside	3,060	2,929	2,668	4.5%	14.7%
Dulwich	1,659	1,678	1,640	-1.1%	1.2%
Erindale	1,172	1,183	1,122	-0.9%	4.5%
Glen Osmond	2,154	1,997	1,877	7.9%	14.8%
Glenside-Eastwood	3,574	3,193	3,018	11.9%	18.4%
Glenunga-Frewville	3,074	2,878	2,658	6.8%	15.7%
Hazelwood Park	1,953	1,874	1,832	4.2%	6.6%
Kensington Gardens	2,498	2,457	2,347	1.7%	6.4%
Kensington Park	2,627	2,527	2,491	4.0%	5.5%
Leabrook	1,605	1,572	1,552	2.1%	3.4%
Linden Park	2,367	2,024	1,888	16.9%	25.4%
Magill	2,562	2,391	2,372	7.2%	8.0%
Mount Osmond-Waterfall Gully	640	541	498	18.3%	28.5%
Rose Park	1,375	1,375	1,399	0.0%	-1.7%
Rosslyn Park	1,469	1,460	1,461	0.6%	0.5%
St Georges	1,726	1,629	1,421	6.04%	21.5%
Stonyfell	1,266	1,208	1,203	4.8%	5.2%

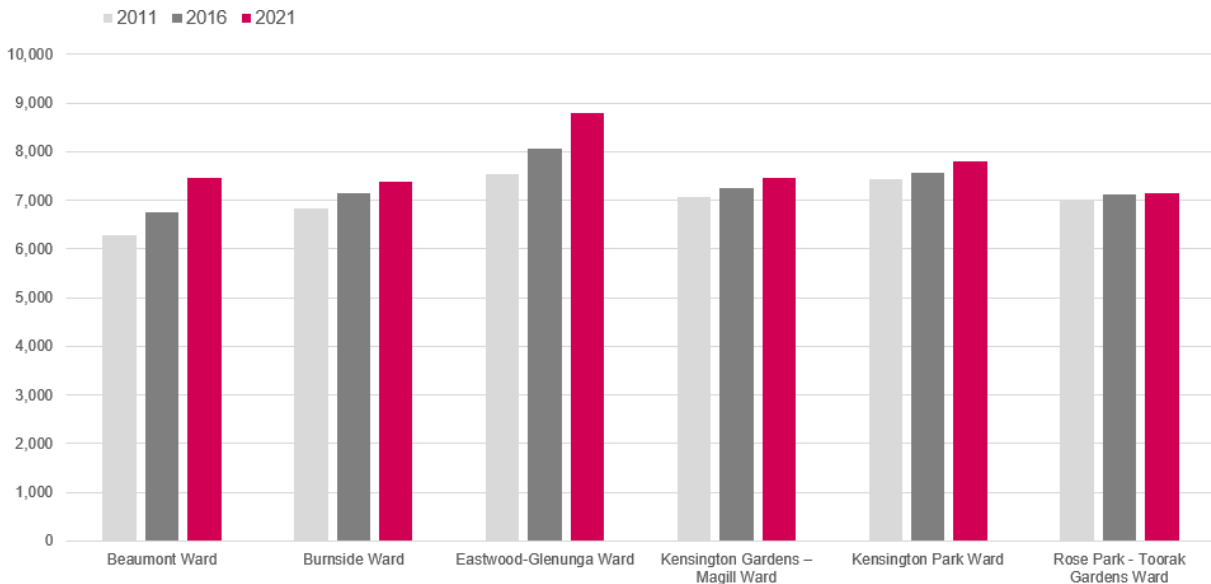


Toorak Gardens	2,604	2,620	2,496	-0.6%	4.3%
Tusmore	1,503	1,450	1,469	3.7%	2.3%
Wattle Park	1,885	1,809	1,832	4.2%	2.9%
City of Burnside	46,030	43,911	42,190	4.8%	9.1%

## Population Trends by Ward

Figure 13 shows Burnside’s population growth across Wards, with Beaumont Ward and Eastwood- Glenunga Ward experiencing the most significant percentage increases over the past five and ten years.

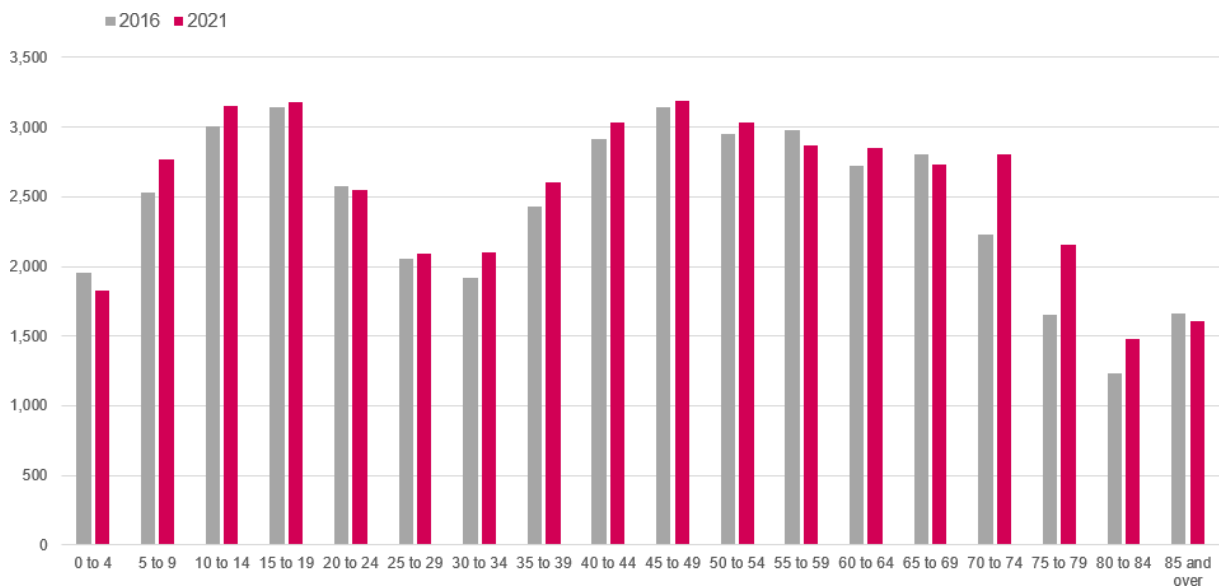
Figure 13 – Suburbs Population Trends



## Population Age Groups

The largest age groups in Burnside are the 10-14, 15-19, and 45-49 age brackets (Figure 14). Most age groups in Burnside experienced an increase in numbers over the past five years, with the most significant increases being in the 70-74, 75-79, and 80-84 age brackets (Figure 14).

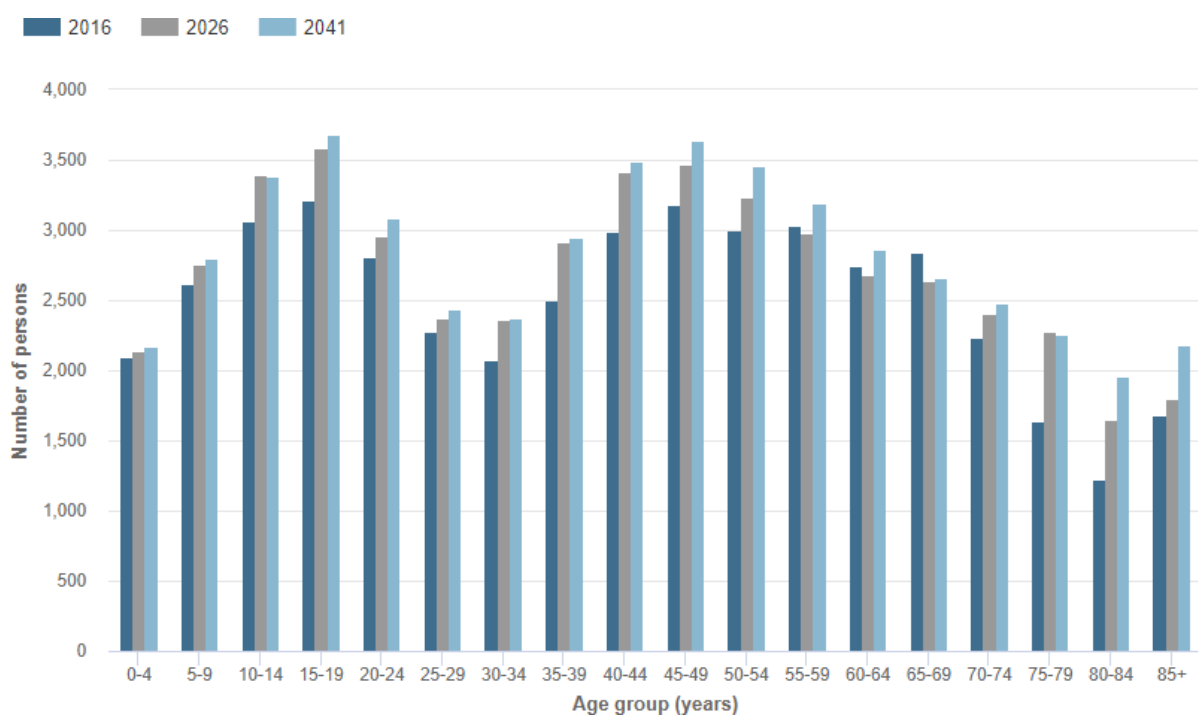
Figure 14 – Population Five Year Age Groups



Council’s demographic consultants are currently developing an updated age profile of the people who left Burnside between 2016-2021 to determine if there is a correlation with the dip in Burnside’s population age.

Most Burnside age groups are forecast to increase over the next four years except for the age brackets of 30-34 and 55-69 (Figure 15). The most significant increases are forecast for the age brackets of 10-19, 35-44, and 75-84 (Figure 15).

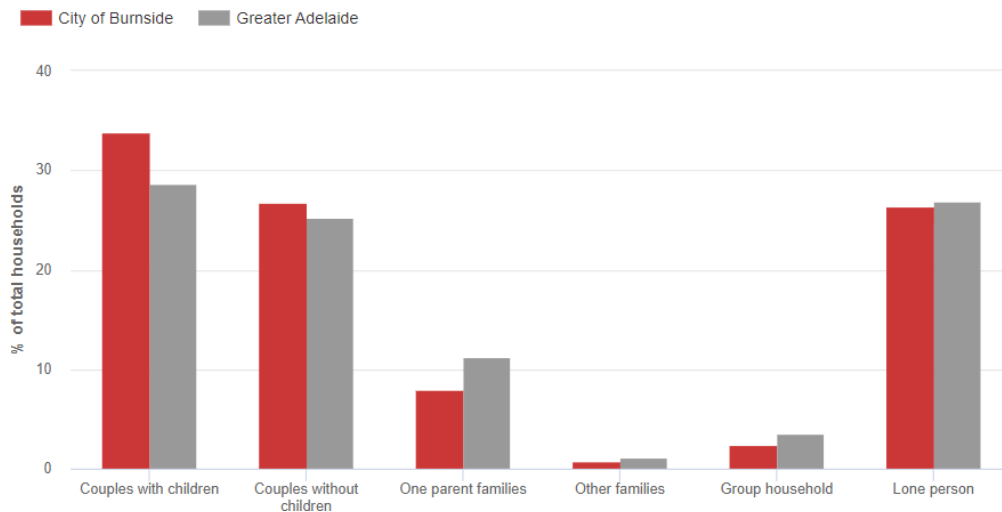
Figure 15 – Forecast Age Structure



## Household Types

Households comprising couples with children were the most significant household type in the City of Burnside, with lone-person households and households comprising couples without children also making up significant percentages of total households (Figure 16).

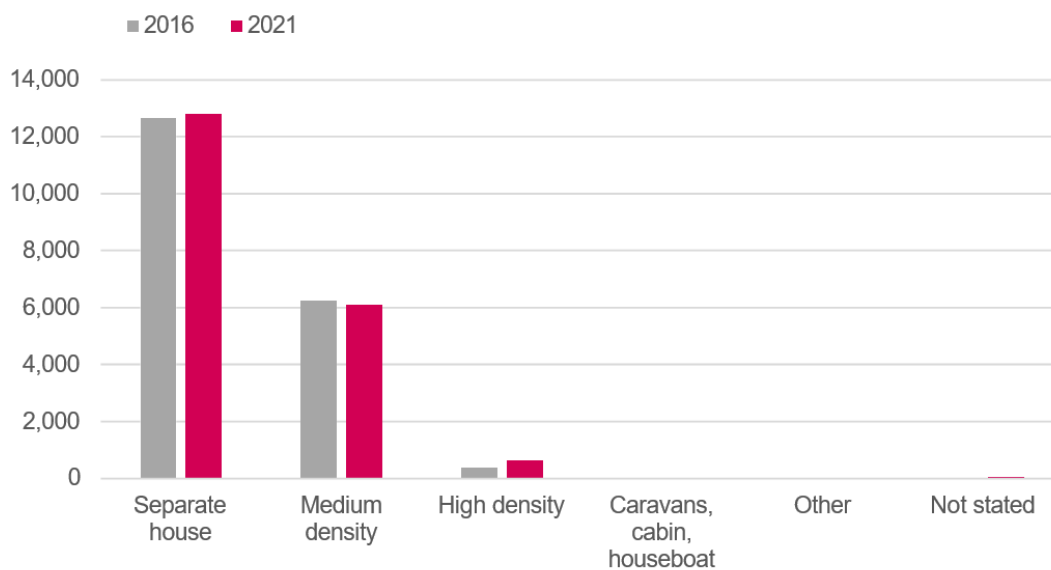
Figure 16 – Household Type



## Dwelling Structure Types

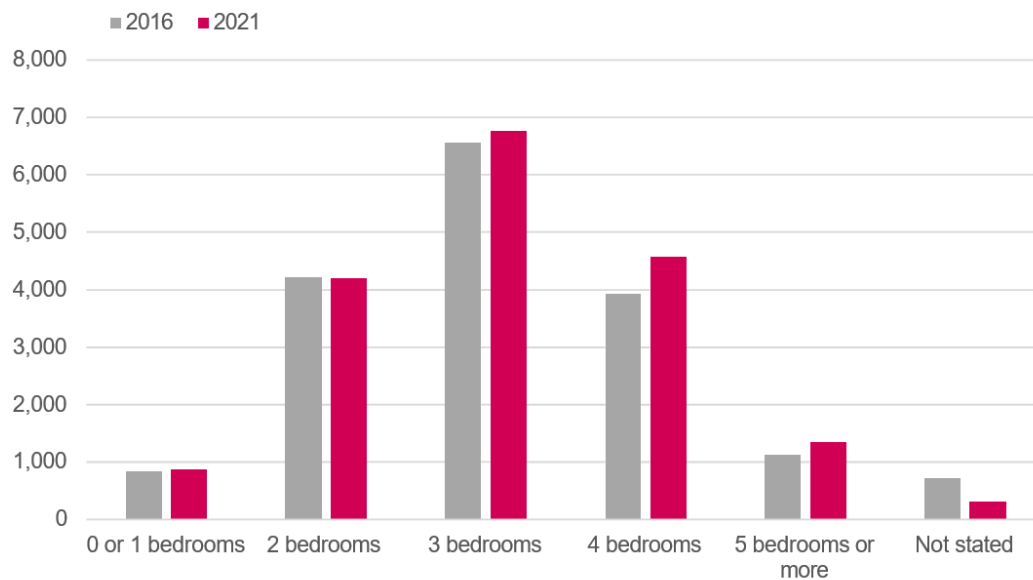
The City of Burnside continues to have a significantly higher proportion of separate houses compared to medium-density and high-density housing. There were slight increases in the number of separate houses and high-density housing and a slight decrease in medium-density housing (Figure 17).

Figure 17 – Dwelling Structure Types



Dwellings consisting of 3 or 4 bedrooms continue to dominate the housing stock in Burnside (Figure 18). The number of 3 to 5 bedroom dwellings has increased since 2016, while the number of 2 bedroom dwellings decreased slightly (Figure 18).

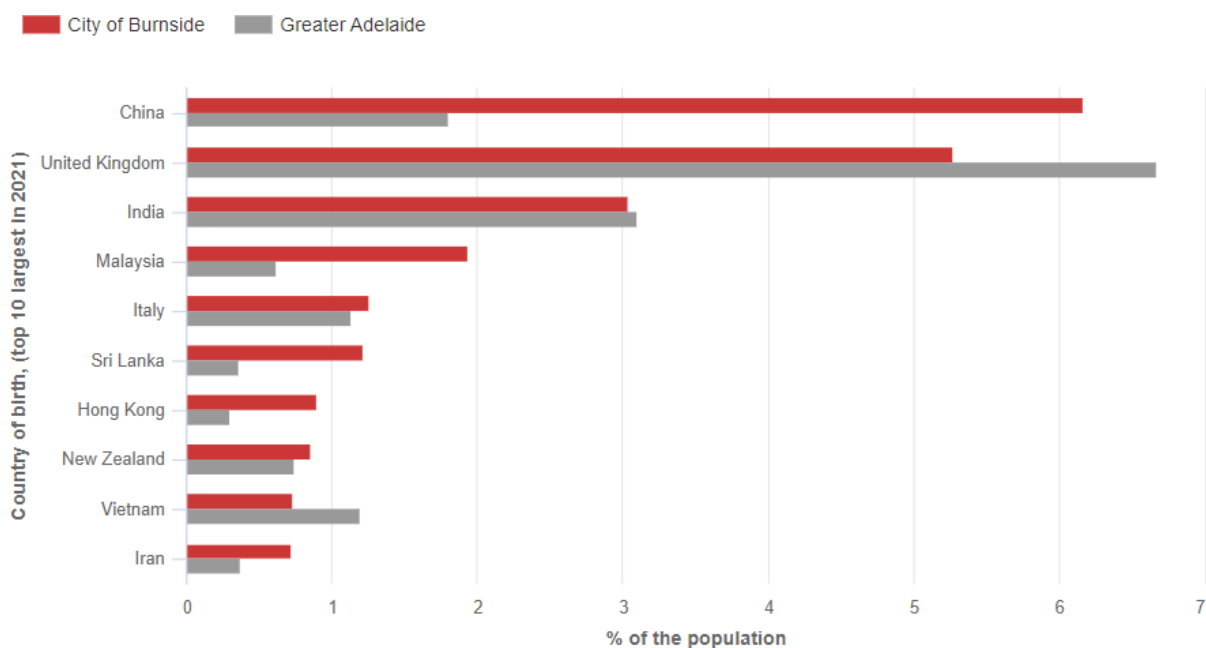
Figure 18 – Number of Bedrooms per Dwelling



## Overseas Birthplaces

In relation to residents born overseas, Figure 19 shows that compared with Greater Adelaide, Burnside’s population consists of a higher proportion of people born in China. People born in the United Kingdom, India, Malaysia, Italy, Sri Lanka, Hong Kong, New Zealand, Vietnam and Iran are also strongly represented in Burnside.

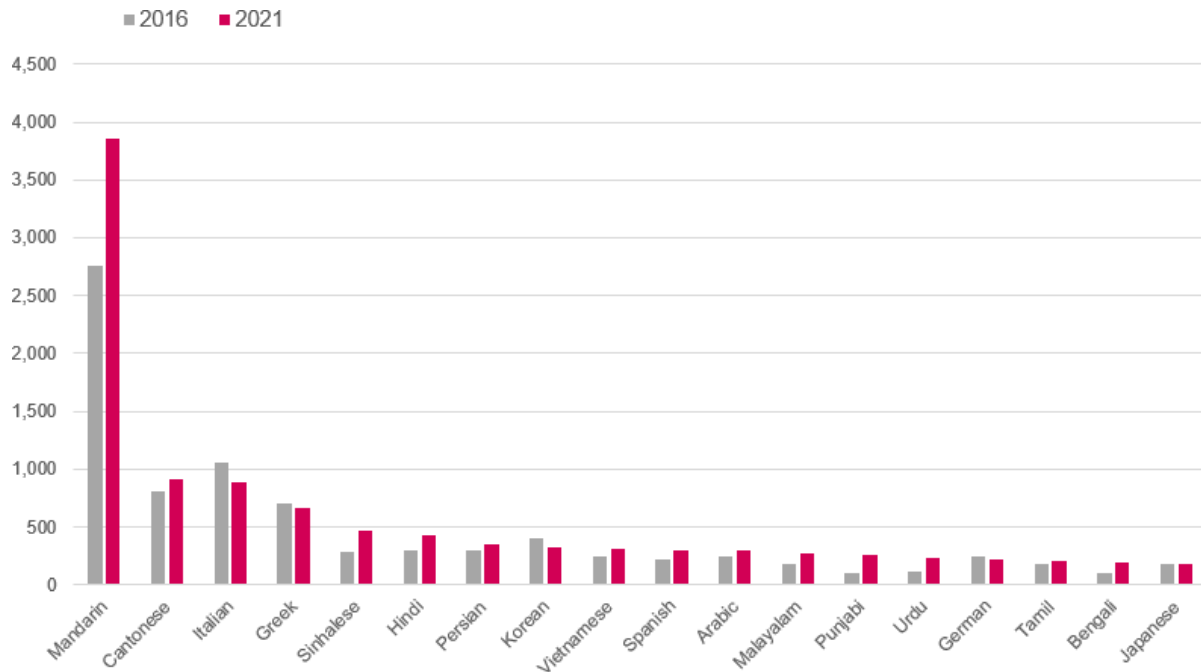
Figure 19 – Overseas Birthplaces



## Languages other than English

Regarding languages spoken at home other than English, Figure 20 shows a significant increase in the number of people who speak Mandarin, along with increases in Cantonese, Sinhalese, Hindi, and Persian.

Figure 20 – Language Spoken at Home other than English



## Household Income and Housing Payments

Based on the SEIFA Index, Burnside is currently rated as the most advantaged (least disadvantaged) local government area in South Australia. All suburbs in Burnside are above the national average, and the majority are in the top 10 per cent of the nation.

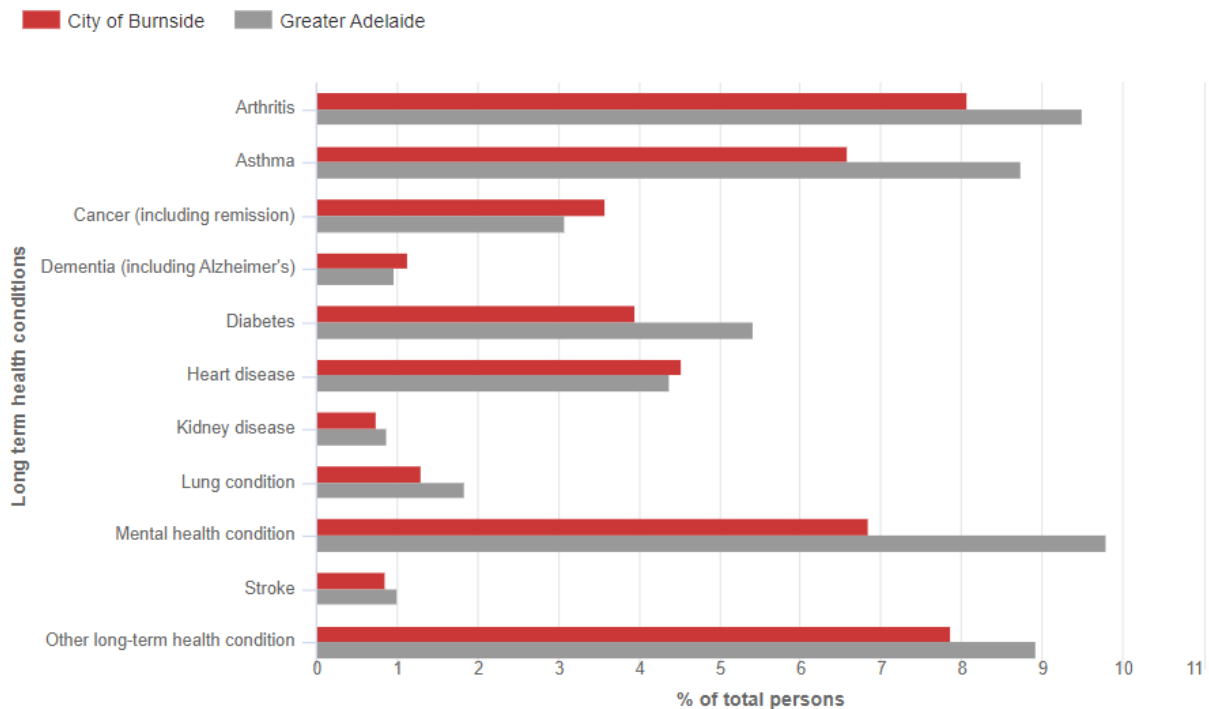
Figure 21 – Income and Housing Payments

TREND from 2016 to 2021	City of Burnside	South Australia
Median weekly household income	\$2,069 ▲ +21%	\$1,455 ▲ +21%
Median weekly rental payment	\$360 ▲ +8%	\$300 ▲ +12%
Median weekly mortgage payment	\$530 ▲ +14%	\$346 ▲ +4%

## Long Term Health Conditions

As a newly introduced category, the Census now provides data on the number of persons with long term health conditions. Per Figure 22, Burnside has relatively higher rates of cancer, dementia and heart disease compared to Greater Adelaide but lower rates of mental health conditions.

Figure 22 – Long Term Health Conditions



For more information, you are encouraged to review the Community Profile, Social Atlas, and Population Forecast modules are available via:

<https://www.burnside.sa.gov.au/About-Council/About-Us/Community-Profile-Population>